

Minamiboso

Monthly Kouhou Newsletter

English Version



Staying Healthy..... P. 2
The New Revised Light Automobile Tax
..... P.5

Eco News P. 6
The Minamiboso Production Business Club is
Recruiting!P.10
Water Meter Replacement P.13

The Kuroshio Soccer Festival

(Read about it on page 15)

September 2014

Issue No. 102

Staying Healthy

(Health Support Division 36-1152)

Have you had the Special Health Check-up?

Special health checkups are being conducted for people enrolled in Minamiboso Citizen Health Insurance. They will be conducted en masse until October 12th, and in doctors' offices until November 28th. If you have not gotten one of these check-ups yet, please take this opportunity to do so. (For detailed information, consult either the June or August editions of the Kouhou.)

Individualized Health Guidance

Individualized Health Guidance is available to help prevent and treat metabolic syndrome. This health counseling service, paid for by health insurance providers, will be based on the patient's risk of developing metabolic syndrome as determined by a medical examination.

Lifestyle-change counseling will be provided to patients who are deemed to have a high risk. Nurses and nutritionists will be providing support to help patients stay with their programs and not revert to bad habits.

The system for notifying those who are eligible for the Individualized Health Guidance service varies by insurer, but once you have are notified, please take advantage of this opportunity.

*Those who are already receiving treatment for high blood pressure, diabetes, or lipid disorders are not eligible.

The following graph shows the average results for patients who received Individualized Health Guidance over a 6 month period from autumn of last year to spring of this year.

Type of Measurement	Target	Measurement At First Examination	After 6 Months
Body Weight (kg)		82.7	72.6
BMI	Under 24.9	270.0	23.7
Waist (cm)	Under 84	91.5	82.4
Systolic BP	Under 129	130	117
Diastolic BP	Under 84	88	78
Body Fat %		29.4	23.8
Neutral Fat	Under 149	148	62
HDL	Under 40	43	61
LDL	Under 119	189	145
Blood Sugar	Under 99	103	99
HbA1c (NGSP)	Under 5.5	5.5	5.5

Improving Metabolism by Eating More Vegetables and Exercising – Mr. K, Age 50

I was diagnosed with metabolic syndrome at the city's special health exam, and was put into the Individualized Health Guidance System's Active Support Program.

I am very busy with work and have to wait until after 9 PM to eat dinner. I couldn't change that, so I started my lifestyle improvement program by doing a workout on the radio. I saw almost no results after 2

months. So, with my wife's help, I started eating salad 3 times a day, cut back a little on carbohydrates, and started drinking plenty of water. In addition to eating better, I started experimenting with light weight training. I saw positive results as my weight started to

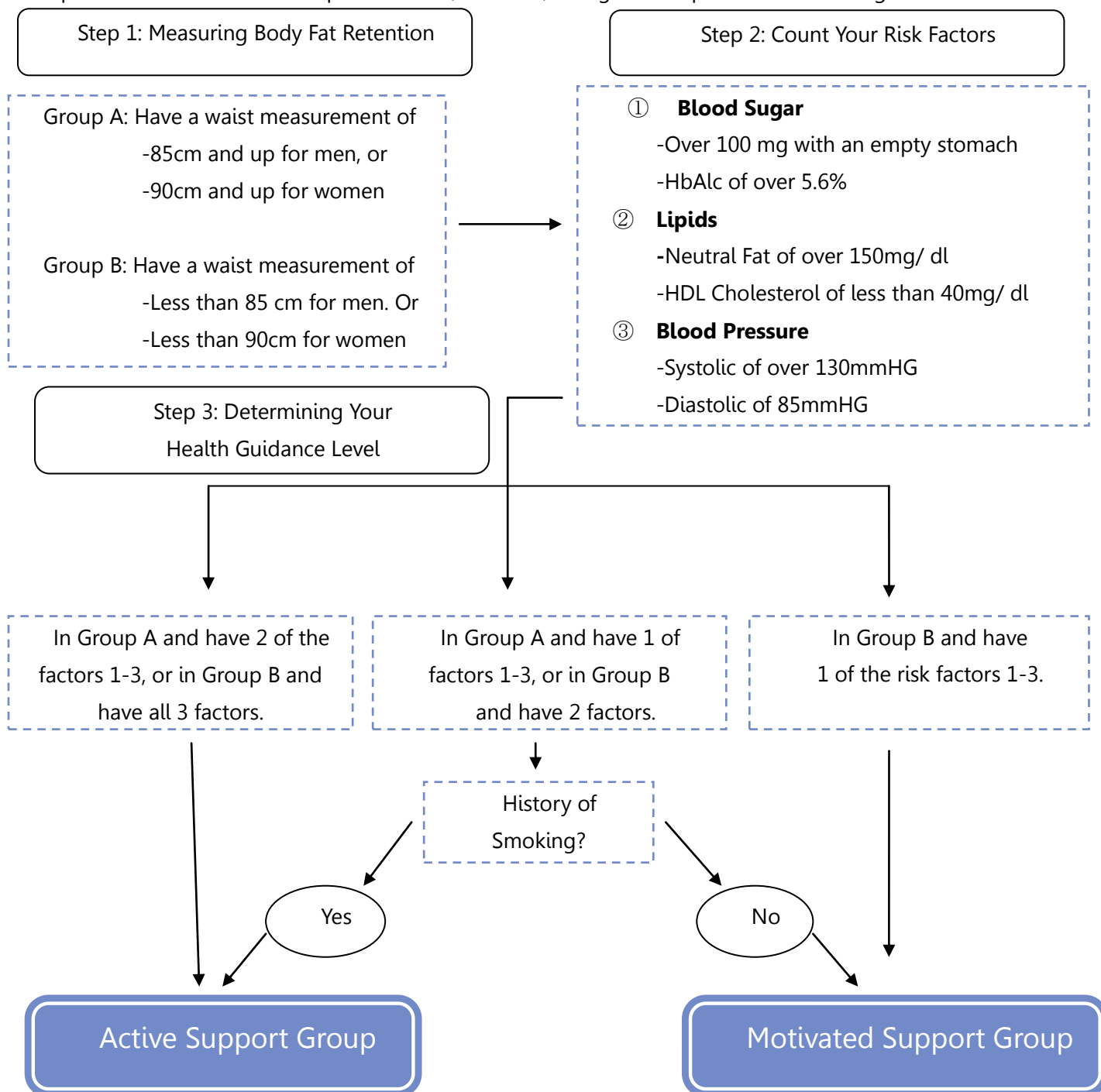
decrease and my waist size shrank gradually. When I noticed myself getting stronger, I switched to a harder weight training workout. It worked immediately.

(Continued on page 4.)

The Selection Process for Individual Health

*These criteria apply to people between the ages of 40 and 64. For those from ages 65 to 74, if you have any of the three risk factors, you will be in the Motivated Support Group.

*People who take medicine for lipid disorders, diabetes, or high blood pressure are not eligible.



(Continued from Page 2)

My body weight was decreasing and I had good results from a blood test as well. I was able to improve my daily lifestyle habits without any steps that were too difficult, and in a half-year I had lost over 10 kilograms. Now that I am 50, I am done with my days of drinking and eating too much and I want to keep improving my lifestyle from now on. I am thankful for the help I got from the people who worked with me from the Health Guidance program and to my wife for making me meals with more vegetables.

-Mr. K's Results after 6 months:

Went from 82.7kg down to 75kg

By walking and doing weight training at least 4 times per week.

Chickenpox Vaccines for Children

Eligibility and Dosage

The vaccine is for children of ages 1 to 3, and is to be administered twice. Generally, the first dose is given between the ages of 1 year and 1 year and 3 months. The second dose is given 6 months to 1 year after the first.

*Children over 1 year and 3 months who have not had the first dose should get the first vaccine as soon as possible, and the second dose 6 months to one year later.

*At a doctor's discretion, the second dose may be given as soon as 3 months after the first.

Children of ages 3 to 5 who have not been vaccinated will be given one dosage.

<Attention>

- Children who have had chickenpox will not be vaccinated.
- Children who have received a chickenpox vaccine in the past outside of this new system will be considered as having already received the full dosage.
- A notice will be mailed to families with children of the right age for this vaccine in late September. If your

child has already had chickenpox or has been vaccinated outside of the new system, please contact the Health Support Division before trying to get the vaccine.

- Eligible families who do not receive a notice or who have moved should contact the Health Support Division.

Pneumonia Vaccines for the Elderly

Eligibility

To be eligible, you must meet one of the following requirements.

- 1. During the 2014 fiscal year (ending March 31st 2015), be age 65, 70, 75, 80, 85, 90, 95, or 100.**

*You are also eligible if you turn one of these target ages in a given year before 2018.

*Starting 2019, the vaccine will be for people turning 65.

- 2. Be age 60 to 65 and have an immunity disorder related to the heart, kidneys, or HIV. (Must have a Level 1 Physical Disability Notebook.)**
- 3. Turn 101 years of age during the 2014 fiscal year (on or before March 31st 2015).**

Number of vaccinations: 1

<Attention>

- People who have had a pneumonia vaccine in the past, regardless of whether it was paid for by the individual or the public, are not eligible.
- People meeting numbers 1 and 3 above will be sent an individual notification in late September. Others who want to be vaccinated should apply to the Health Support Division after then.
- Eligible individuals who have not received a notification or have moved should contact the Health Support Division.

- Because the new vaccination system will change completely, people who have a vaccination voucher already should get

vaccinated by September 30th.

Contact: Health Support Division. Phone: 36-1152

Reformed Taxes for Light Automobiles

The tax system for light automobiles is being revised this year. .

Taxes are increasing in 2015 for motorcycles, 2-wheeled light automobiles, and 2-wheeled compact cars.

Type of Vehicle		Yearly Tax	
		2014 and Before	Starting 2015
Motorcycle	Engine size below 50 cc	¥1,000	¥2,000
	Over 50 cc and below 90 cc	¥1,200	¥2,000
	Over 90 cc and below 125 cc	¥1,600	¥2,400
	Minicar below 50 cc	¥2,500	¥3,700
Light Automobile	Two-wheeled (including those with sidecars) 125 cc – 250 cc	¥2,400	¥3,600
	Two-wheeled compact (including those with sidecars) Over 250 cc	¥4,000	¥6,000

4-wheeled automobiles registered on or after April 1st 2015 are subject to a new tax rate.

The current tax rate will continue to apply for 13 years following registration of vehicles registered by March 31st 2015 (i.e. that are receiving a vehicle registration number for the first time).

Vehicles that were assigned registration numbers 13 years or longer ago (excluding light electric cars) will be subject to higher taxes starting in 2016.

Type of Light Automobile			Yearly Tax		
			Registered Before March 31 st 2015	Registered on or After April 1 st 2015	13 Years Have Passed Since Registration
3 wheels, engine under 660 cc			¥3,100	¥3,900	¥4,600
4 or more wheels and engine below 660 cc	Passenger	Personal	¥7,200	¥10,800	¥12,900
		Business	¥5,500	¥6,900	¥8,200
	Freight	Personal	¥4,000	¥5,000	¥6,000
		Business	¥3,000	¥3,800	¥4,500

{Example: A 4-wheeled light passenger vehicle for personal use}

-If registered August 7th 2002

2015 tax- ¥7,200 (the old rate)

2016 tax- ¥12,900 (13 years since registration)

-If registered April 1st 2015

2015 tax- ¥10,800 (the new rate)

2029 tax- ¥12,900 (13 years since registration)

No. 81

Eco News

Environmental Preservation
Division 33-1053

This month's environmental slogan was the runner up in the 2013 slogan contest.

"To reduce garbage, we each have to make an effort."

Tomoya Hirano, 2nd year student at Chikura Middle School

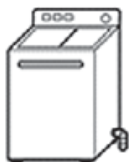
Recycling Appliances the Right Way

Appliance companies are required to recycle air conditioners, televisions, refrigerators, freezers, washing machines and dryers when the customer decides to dispose of them. Additionally, computer companies are required to collect and recycle disused computers. Because of this, the city will not collect these disused appliances and electronics.

Televisions, refrigerators, and other appliances being illegally disposed of on roadsides and in the woods has been a major problem in recent years. Illegal dumping such as this is a serious crime. Individuals who commit this crime will serve up to 5 years in prison, pay a fine of up to ¥10,000,000 (¥300,000,000 for organizations and companies), or both. To assure that parts can be reused, recycle old appliances properly.

How to Recycle Appliances

(Office appliances excluded)



When buying
a replacement

Request that the store you are buying from to take the old one.

Other
situations

1. Ask the store where you bought it to take the old appliance.
2. If that is not possible, take note of the brand name and go to a nearby post office to buy a recycling voucher. Then take the appliance to a collection site yourself, or
3. If you cannot transport it yourself, use a collection and transport company.

For details, go to the Household Appliance Association Recycling Voucher Center website (<http://www.rkc.aeha.or.jp/>) and look at the garbage separation and disposal guidelines on the city website.

How to Recycle Computers

This applies to:

Desktop computers

Laptops

CRT Monitors

LCD Displays

Combined CRT monitor/ computers

Combined LCD monitor/ computers



1. Request that the maker collects and recycles the computer. *If the company does not offer this service, make a request to the PC 3Rs Promotion Association.
2. If the computer does not have a recycling label, you must pay the maker's "Collection and Recycling Fee."
3. Pack the computer, affix the Eco Pack voucher that came with it, and take it to your nearest post office. Alternatively, you can contact the collection center listed on the Eco Pack voucher and they will come to collect the PC.

For details, go to the PC 3Rs Promotion Association's website at <http://www.pc3r.jp/>.

These Groups Participated in the Eco Cap Initiative



Nanaura Elementary School



Asaina Elementary Student Council



Tomiura Elementary Student Council



Miyoshi Middle School



Tomiura Middle School Beautification Club



Miyoshi Elementary School



The City Volunteer Team



Miura Construction Company



Kamoseisou Nenrakuseikai

It is Illegal to Burn Your Own Garbage

Burning garbage does not just annoy your neighbors with smoke and bad smells; it also gives off dioxin, which is harmful to the human body.

Either put your garbage out on the designated collection day or take it directly to your area cleaning center.

Burning waste outdoors (with only a few exceptions) is prohibited under the law. If you break this law, you can serve up to 5 years in prison, pay a ¥10,000,000 fine, or both.

Exceptions:

The following are exceptions, but being a public nuisance while burning waste is still prohibited.

- National or regional public associations may burn waste if it is necessary for managing their facilities
- Waste can be burned as an emergency measure against, prevention of, or restoration after a natural disaster.
- If it is necessary to conduct religious or cultural customs, waste may be burned.
- The farming, forestry, and fishing industries may burn waste when it is unavoidable.
- You may burn small amounts of household garbage in bonfires and campfires.

Be careful and considerate when burning waste:

- Notify your neighbors first.
- Make sure there are no futon or laundry hanging outside in the vicinity.
- Do it on a day with little or no wind. Take the wind direction into consideration.
- Avoid burning large amounts all at once. Do it little by little.
- Be aware of the time of day.

Contact: Environmental Preservation Division. Phone: 33-1053

Chiba Business Start-up Seminar

When: Saturday, October 4th

9:30 AM – 4:30 PM

Where: Ichikawa Station Administrative Center,
I-Link Room (Ichikawa City, Ichikawa South 1-1-1,
I-Link Town Ichikawa The Towers East, 3rd floor)

Capacity: 50 (First-come-first-served by application)

Eligibility: People who plan to start a business or
have recently started a business

Attendance Cost: Free

Topics Covered: Things to know before starting a
business / The new business assurance system / The
Business Start-up Council / Drafting an official
business plan / A presentation demonstrating the
process (Makita Kiwa from Solari) / Using business
loans / Individual consultation

How to Apply: Fill in the necessary items on the

application sheet and submit it by fax or on the web.

Contact: 261-7123 Chiba City, Mihama District,
Nakase 2-6-1 WBG Maribu East, 23rd Floor, Chiba
Prefecture Industry Promotion Center. Integrated
Support Room (Challenge Enterprise Center)

Phone: 043-299-2907 Fax: 043-299-3411

E-mail: kigyo@ccjc-net.or.jp

URL: <http://www.ccjc-net.or.jp/support/>



The Unlawful Dumping of Garbage is a Crime

The illegal dumping of garbage at roadsides, in forests and mountains, and other places out of the public view is showing no significant decline. This kind of littering is more than just an eyesore. It is bad for the environment because it can cause bad odors and pollution to water and soil.

What is Illegal Dumping?

Illegal dumping consists of throwing away or burying waste in fields, forests and on mountains. It is an act done without regard for others, and is in direct opposition to garbage disposal laws.



Contact: Environmental Preservation Division
Phone: 33-1053

For example:

- Loading waste into a truck and throwing it away on an unpopular mountain
- Piling up garbage in a natural area and leaving it there
- Using a dump truck or other heavy machinery to bury waste on vacant land
- Leaving sulfuric acid or other harmful waste in an empty warehouse or disused factory
- Throwing cigarette butts, empty cans, and other litter on the road side

Punishment

Those who have committed the crime of illegal dumping will serve up to 5 years in prison, pay a fine of up to ¥10,000,000 (up to ¥300,000,000 for organizations and companies), or both.

If illegal dumping has occurred on land which you own or manage, and the perpetrator is unknown, you must take responsibility for the disposal of the waste yourself.

Land where the grass has not been mowed, there is scattered garbage, or any land that is not well managed is susceptible to illegal dumping. To make it more difficult for criminals to dump waste on your land, it is important to install fences and cut weeds and grass.

The Application Deadline for Special Case Welfare Benefits

The deadline to apply for Special Case Welfare Benefits is Wednesday, October 1st.

If you do not apply before the deadline, you will not be able to receive aid. If you have the application, please file it as soon as possible.

Those who do not have the application but believe they are eligible for these benefits based on their tax return should contact the Benefits Section.

Contact: Social Welfare Division, Benefits Section
Phone: 33-4633

A Notice to Those Who Have Become Ineligible for Children's Medical Benefits Under the New Income Limit

An income cap has been put in place to limit who can receive Children's Medical Benefits. There is also assistance available for young children who require regular hospital visits or medicine for chronic conditions such as asthma. To find out if you are eligible, contact the Social Welfare Division.

Phone: 36-1153

Subsidized Preventative Influenza
Vaccinations for the Elderly

Eligibility:

1. 65 years of age or older. (Medical history forms are available at medical institutions. Please contact them to see if you need a vaccination. To find the name of the medical institution that has your records, check the city website.)
2. Between the ages of 60 and 65 and have heart, kidney, or respiratory issues or suffer from an immune deficiency due to HIV. (Must have a Level 1 Physical Disability Notebook)

*An appointment is required. Please apply to a local community center (excluding Miyoshi Community Center), Asaina Administrative Center, the Citizenship Division, or the Health Support Division.

Period of Subsidy: October 1st to December 31st

Amount of Subsidy: ¥1,500

*Those who are both eligible and receive Livelihood Protection will get the vaccination free of charge. Please bring your Livelihood Protection Certificate with you to your medical institution. To ask about receiving a certificate, contact the Social Welfare Division (Phone: 36-1151). Please be aware that if you

do not have a Livelihood Protection Certificate, you will be charged for the vaccine.

Contact: Health Support Division. Phone: 36-1152

Inhabitant Tax and Corporation Tax Rates will
be Reduced

In accordance with the 2014 revised tax code, the consumption tax was raised to 8% and a portion of the inhabitant and corporation taxes will become national tax. The revenue from the new national tax will be allocated to local governments.

For the fiscal year beginning October 1st, the corporation tax will be reduced from 12.3% to 9.7% (a difference of 2.6%).

Contact: Taxation Division

Phone: 33-1023

Donations of Good Will
~Giving to Social Welfare~

On Tuesday, August 12th, Takaki Shoutarou gave a generous donation of ¥10,000 to the city. His donation will be put to use promoting the general welfare.

Now Recruiting for the Minamiboso Production Business Club!

The Minamiboso Production Business Club (MBC) has been established by the city and business specialists to support farming, forestry and fishing businesses in taking on projects that encourage the local production and local consumption of products. The MBC is recruiting business people that aim to link agriculture, commerce and industry through 6-step industrialization.

*In order to join, you must be evaluated by the Executive Office.

Requirements:

1. Run a business in agriculture, forestry, or fisheries

(production or manufacturing)

2. Run a business in agriculture, forestry and fisheries distribution or construction (a partner company)
3. Run a business that sells goods created by the agriculture, forestry and fisheries industry (supply)

*Category 1 above must be within Minamiboso City. Categories 2 and 3 do not require this.

Participation Fee: Free. (Transportation and product development costs are the responsibility of each individual business.)

To Apply: Fill out the application form and the

business plan form and submit them to the Executive Office by mail. The forms are available on the Executive Office's website and the city's website. Make all inquiries to the Executive Office.

Contact: MBC Administration (Regional Resources Recycling Division) Phone: 33-1073

Seminar on Linking Agriculture,
Commerce, and Industry

The MBC is holding an information session and individual consultation event. The goal is to create a link between traders and manufactures in agriculture, forestry and fisheries. Attendees will learn what resources they have to offer each other, how to develop new products and services that connect their industries, how to create new markets for products, and about national and prefectural business support systems.

Date/ Time: Friday, September 26th
Starts at 1:30 PM

Location: City Hall, Annex 1, Main Conference Room

Outline:

Part 1: Lectures and Explanations of Systems

- "The Knowhow You Need to Create New Markets" by M&D Research Center
- "Details on the Chiba Agriculture, Commerce and Industry Coordination and Support Fund" by Chiba Prefecture Industrial Promotion Center
- "National Support Systems (The Agriculture, Commerce and Industry Coordination Plan, and the Plan for the Practical Use of Regional Resources)" by Chiba Prefecture Commerce, Industry and Labor Department, Industrial Promotion Division
- "Details on the MBC" by Regional Resources Recycling Division

Part 2: Individual Consultation

This is an individual consultation with a 6-step industrialization planner, a regional resources advisor, and other specialists. If you want to have a

consultation, please indicate so on your application.

Eligibility:

1. Run an agriculture, forestry and fisheries business in the city (production)
2. Run a business in agriculture, forestry and fisheries distribution or construction (a partner company)
3. Run a business that sells goods created by the agriculture, forestry and fisheries industry (supply)

*Category 1 above must be within Minamiboso City. Categories 2 and 3 do not require this. Non-MBC members may also attend.

Participation Fee: Free

Application Deadline: September 22nd

The application form is available on the Executive Office's (Regional Resource Recycling Division) and city's websites. It can be submitted by mail, fax, or email.

Hosted by: Chiba Prefecture Industrial Promotion Center

Joint sponsored by: Chiba Prefecture and Minamiboso City

Contact: MBC Executive Office (Regional Resource Recycling Division) Phone: 33-1073



Nathan's Minamiboso Travelogue

Written/ Translated by Nathan Blackwell, Coordinator for International

自己紹介

はじめまして。新しい国際交流員（CIR）のネイサン・ブラックウェルです。アメリカのオハイオ出身で、オハイオ州立大学で音楽と日本語を専攻していました。

大学に入ってから2年間で音楽学士を取得し、楽団に就職してプロとしてクラリネットを吹きたかったのですが、そういう仕事が少なく、これからも減少傾向にあるので、専攻を変更することになりました。

中学生の頃に「るろうに剣心」や「幽遊白書」などのアニメに夢中になっていて、今までずっと日本語に興味がありました。そのため日本語を専攻に決めて、オハイオ州立大学の基本的な授業を学んだ後に1年間、早稲田大学に留学しました。

その後、帰国して大学を卒業し、国際交流員として南房総市役所に勤めることになりました。この美しく豊かな文化のあるところに住んで働けることは、ものすごく嬉しいです。

このコラムや翻訳や企画するイベントで、市民の皆さんに日本のこと、南房総のことを教えていたり、自分の国の文化も紹介して国際交流がしたいと思っています。よろしくお願いいたします。

Greetings from the New CIR

Hello. My name is Nathan Blackwell, and I am the new CIR in Minamiboso. I graduated from the Ohio State University with a double major in music and Japanese.

While for my first two years of university I was determined to get a music performance degree and play the clarinet professionally, I eventually became discouraged by the lack of music-related jobs.

As a result, I decided to change my major to Japanese, which I had been interested in since my middle school days of watching Rurouni Kenshin and Yuyu Hakusho. After completing OSU's basic spoken Japanese courses, I gained a more serious interest in learning the language. For my fifth and final year of college, I studied abroad at Waseda University.

After returning home and graduating, I applied to the JET Programme. I was fortunate enough to be hired as the CIR for this beautiful city. I feel honored to have the opportunity to learn about and live in such a culturally rich area.

I also hope I can share my own culture with the people of Minamiboso through this column, my translations, and intercultural events.



From the Consumer Consultation Service

Personal Information Erasing Scams are on the Rise

Recently, concerns over personal information leaking and being stolen are prevalent. There are also scams that take advantage of the fear that one's personal information may be abused.

For example: You get a phone call from someone who says they are from "The Livelihood Protection Center." They tell you, "Your personal information is leaking

from 3 places. We were able to stop 2 of those leaks, but there was 1 (Company A) that we couldn't stop. We have to step in on your behalf." A volunteer becomes your representative. Then, you are contacted by Company A and given a special number. When the representative asks you for this number, you give it to them. Then you are told by Company A, "It's illegal to tell someone else your number, so an employee was arrested. You have to pay ¥10,000,000 in bail." You then send Company A the money... This is just one example of the types of scams that have come about recently.

Anyone that calls you offering to erase your personal information is a scammer. Hang up on them immediately.

Once you have paid them money, it is extremely difficult to get it back. Do not pay them anything.

If this happens to you, please contact the Consumer Consultation Service.

Give us a call

The Consumer Consultation Service,
City Expenditures and Lifestyle Consultation
Phone: 33-4300

10:00 AM – 3:00 PM

*We do in-person consultation twice a week. For details, check the Kouhou notification publication.

For inquiries, contact the Division of Commerce and Industry (Phone: 33-1092)

Or the Prefectural Consumer's Center
(Phone: 047-434-0999)

9:00 AM – 4:30 PM

*Not open on Sundays and Holidays

Water Meter Replacement

Water meter replacement is free.

A worker will come to your home and replace your water meter free of charge. Thank you for your understanding and cooperation.

Time Period:

■City Water

From October 1st to October 31st

■Miyoshi Water Authority

From late October to late November

Contact:

1. Water Division. Phone: 44-4611
(Tomiyama, Shirahama, Chikura, Maruyama, Wada)
2. Miyoshi Water Authority. Phone: 22-3782
(Tomiura, Miyoshi)

Paying Your Water Bill

The water system is managed by everyone's water bill payments.

If you do not pay your bill on time, you will be sent a notice or a water shut-off warning.

If your payment is overdue, we will have no choice but to turn off your water. Please be careful so that this does not happen.

You will be billed for water service every two months.

The following are recommendations for convenient places to pay your water bill.

How to Pay Your Water Bill

■City Water (Tomiyama, Shirahama, Chikura, Maruyama, Wada)

○Bank Account Transfer

Money will be transferred from your account on the 20th day of the month following the month when your meter is read. (It will be the next business day if the 20th is a financial institution holiday.)

○ **Paying Directly**

A bill will be mailed to you in the month following the month when your meter is read. Make the payment to the Waterworks Department (in the Asaina Administrative Center), City Hall Main Building, at your local community center, or at your financial institution.

■ **Miyoshi Water Authority (Tomiura, Miyoshi)**

○ **Bank Account Transfer**

Money will be transferred from your account on the 25th day of the month following the month when your meter is read. (It will be the next business day if the 25th is a financial institution holiday.)

○ **Paying Directly**

A bill will be mailed to you in the month following the month when your meter is read. Make the payment at the Authority's office, your financial institution, or at a convenience store.

Contact:

City Water (Tomiyaama, Shirahama, Chikura, Maruyama, Wada)

Water System Customer Center

Phone: 44-5959

Miyoshi Water Authority (Tomiura, Miyoshi)

Customer Service Center

Phone: 25-7311

Inspecting Your Meter for Leaks

One cause of sudden increases in water usage is a leaking meter.

You can inspect your meter for leaks yourself, so make sure to do so regularly. For locations that use a large amount of water, we recommend that you check every day at the same time.

How to Check the Meter

1. Turn off all the faucets in your home.
2. Look at the pilot mark on your meter (see picture). If it is turning even slightly, there may be a leak. Please ask your water service to repair it.

A Warning about Door-to-Door Salesmen

There are disreputable companies who will send salesmen dressed like city or water authority workers to your door to try to convince you to pay for unneeded construction and water purification systems.

Miamiboso and the Miyoshi Water Authority do not sell these purification systems.



Talk of the Town: Recent Events in Minamiboso

The 27th Sazanami Kanto Mini-Basketball Tournament. Tomiura, Minamiboso

From August 22nd to 24th, the Sazanami Mini-Basketball Tournament was held in Tomiura, Minamiboso.

Teams from each prefecture in the Kanto region were chosen to participate.

In the Tomiura Gym, where it was humid enough to sweat even when sitting still, these champion school teams had a heated battle.



The 37th Kuroshio Soccer Festival

The Kuroshio Soccer Festival took place from August 22nd to 24th at the Chikura Athletic Park. On the first day, there was 11-player soccer; on the second, there was sand soccer on the beach at Setohamakaigan; and on the third day, there was 5-player futsal.

In sand soccer, the "field" makes it difficult to pass the ball because it loses its energy over a short distance. It was a challenge, but the players enjoyed the experience because it was different from what they were used to.

Notices

Autumn Jumbo Lottery

~Promotion for New Towns in 2014~

The proceeds from this lottery will go towards making various towns pleasant, nice places to live. Please purchase your tickets inside Chiba Prefecture.

Prize: One prize of up to ¥390,000,000 for one person with the winning number and the two adjacent numbers.

On sale: From September 19th to October 10th

Price: ¥300 per ticket

Date of drawing: Friday, October 17th

Contact: Mizuho Bank Lottery Department, Inquiry Center. Phone: 03-3535-9033

Locations to Buy Highway Bus Tickets are Changing

Starting September 1st, tickets for the highway bus to Tokyo, Yokohama, and Haneda, as well as ticket books for buses to Yokohama, Haneda, and Chiba City will be sold at the Tourism Information Center at the Tomiura Genki Club. Please buy your tickets at this location.

Tickets will not be sold at the Biwa Club after September 30th.

Contact: Tourism Information Center
Phone: 28-5307

The 2015 Agriculture and Forestry Census

The 2015 Agriculture and Forestry Census will survey the state of these industries across Japan as of February 1st, 2015.

This very important census is done every five years to evaluate agriculture and forestry policy

Starting in mid-January 2015, census workers visit everybody working in the agriculture and forestry industry and ask them to fill out a census form. These workers will be carrying credentials with them. Thank you for understanding and cooperating with this study.

Details we will ask for:

The state of and use of your land; what you produce and sell; who works on the land, etc.

Contact: Information Implementation Division
Phone: 33-1003



(“Utchii”
Mascot Character for
the Agriculture and
Forestry Census)

August Signboard

Some events from August:

- The Minamiboso Diet convened for its 3rd regular meeting
- The 35th 9 Prefecture and City Combined Disaster Prevention Practice took place in Chiba
- The 2013 Administrative Reform Effort shows results
- The 2014 Municipal Panel Discussions were held
- The LFC Soccer School came to Minamiboso

For more information, visit the city website.

Now Recruiting

Participants for Light Sports Day

Anyone can come and enjoy this sports day hosted by the City Sports Promotion Committee Liaison

Association (President Takahashi Yoshihiro).

To participate, you just have to be healthy and live in Minamiboso. Beginners are encouraged to come.

When: Sunday, November 16th

-Soft Volleyball and Ground Golf both start at 9:30 AM

*Please arrive 30 minutes before the games begin.

Where: Soft Volleyball- Minami Elementary Gym
Reinan Middle School Gym
Ground Golf- Maruyama Fitness Grounds

Events:

- Soft Volleyball
Must have a team of 4 women, one of whom is over 50.
- Ground Golf
Singles- Any age or sex
Mixed- one of the following
 1. 1 adult and 1 child of elementary age or younger, or
 2. 1 boy and 1 girl, both elementary age or older

Participation Fee: Free.

What to Bring:

- For Soft Volleyball-
Indoor gym shoes, a change of clothes, towel, drinking water
- For Ground Golf-
Outdoor tennis shoes, a change of clothes, towel, drinking water

Application Deadline: Friday, October 24th

Contact: Lifelong Learning Division
Phone: 46-2964

Food Stall Operators for the 6th Minamiboso Produce Festival

We are now looking for people to run food stalls at the 6th Minamiboso Produce Festival.

Application Period: From Wednesday October 1st to Friday October 24th

The Festival

When: Sunday, November 30th, from 9:30 AM – 3 PM

Where: Around the Chikura Fishing Village Center
To ask about stall requirements and more, call: The Produce Festival Executive Committee Secretariat
Phone: 44-1331 or Naibou Chamber of Commerce
Phone: 33-2257

Free Consultation

Mediation Services

Do you have family problems including arguments over inheritance, marriage problems, or disputes with relatives? Or, are you having arguments with others in the community about construction, debt or traffic accidents? A mediator from the courthouse can assist you in officially settling these disputes.

This service is confidential, free, and does not require an appointment.

When: Saturday, October 4th
10:00 AM – 3:00 PM

Where: Tateyama Community Center, 2nd Floor
Contact: Tateyama Mediation Association inside the courthouse, Tateyama City Houjou 1073
Phone: 22-2273

How prepared for earthquakes is your home?

We will give consultations on your home's earthquake-preparedness. Appointment required.

When: Sunday, October 5th
1:00 – 4:00 PM

Where: Shirahama Public Hall
Contact: Management Division
Phone: 33-1102

Minamiboso Folklore

#101 “Whaling in Otohama”

Nowadays, Wada Bay is the only place in the prefecture where whaling is done, and it is done solely by the Gaibou Whaling Company. However, you must not forget that until about half-way through the Showa Era, there was a site for whaling in Shirahama too.

A whaling company called Toukai Fisheries, which started in Tateyama in the Shouwa Era, decided to streamline the whaling industry in the area by combining several companies and moving to Otohama. Thus, in 1941, Otohama Bay became the only whaling site in Boso.

About 100 Baird's beaked whales were caught each year in this fishing zone, an area of 20 nautical miles reaching from Sunosaki to Katsuura. The whales, which grow to about 10 meters in length and weigh 10 to 15 tons, were processed in the plant in Otohama. The whales were used for fresh meat, *tare*, whale oil for insecticides, and their bones for manure. There are stories about the meat being taken to and sold in faraway villages removed from the sea. It is said that merchants loaded the meat, along with sharp knives and scales, into bicycle baskets and rode as far as Inamiya, Kokufu, Takida, and Yatsuka.

Introducing Local Community Organizations #79

Odo Plum Village Promotion Commission, Processing and Sales Committee

-Odo Plum Village Tankuro Marketplace-

President: Youzou Hoshiya. Members: 16



This column aims to support local community organizations in this area. If you know of other groups that are doing great things, please let us know about them.

Contact: Civic Cooperation Division. Phone: 33-1005

Minamiboso MinMin Net address: <http://civil.mboso-etoko.jp/>

Under the "Gardening Tree 21 Planning and Renovation Project" in old Maruyama Town, a plum tree sapling was planted at every house in the Odo district. Now the area is known as "Plum Town" and yields a large harvest of fine fruit. The trees flowering in the spring is also a sight to behold.

The Tankuro Marketplace was established in April 2006 as a place where citizens can come and sell their own plum and vegetables products. The Marketplace

celebrated its 8th year this April.

The members, of which there were 17 at first, take turns tending to the stand every Saturday and Sunday. They sell crisp plums, low-sodium dried plums (which are served in school lunches), plum jam, and home-made low-sodium miso. Their seasonal fresh fruit and vegetables are also popular.

The crisp plums are an especially big hit because of their texture and refreshing sweetness.

As a place where ideas and information can be exchanged within the community, the marketplace is also thought to contribute to making the Odo area a better place to live.

The Tankuro Marketplace gets support from the whole community, but more than anything, its continued success is thanks to customers who take the trouble to come from faraway places.

Thank you for your continued patronage.



Crisp Plums

Contact: Tankuro Marketplace

Phone: 46-4715 (Only Saturdays and Sundays)

Population Changes

as of September 1st 2014

Total Population: 41,192 (-43)

Male: 19,735 (-19)

Female: 21,457 (-24)

Total households: 17,307 (-12)

Births: 19

Deaths: 61

Moved in: 71

Moved away: 72

City Website:

<http://www.city.minamiboso.chiba.jp>

Twitter:

http://twitter.com/minamiboso_koho

Facebook: <http://www.facebook.com/minamibosocity>

Chiba TV Prefectural information:

<http://www.chiba-tv.com/shicho/>

Mobile site:



QR Code to register for the Minamiboso Safety and Peace of Mind Alert System:



*To begin registration, send an empty email.

***Kouhou* Minamiboso August Edition**

Published August 14th, 2014

Published by

Minamiboso City 〒299-2492

Chiba Prefecture Minamiboso City

Tomiura-Chou Aoki 28

Edited by

Secretariat and Publicity Division

Phone: 0470-20-4591

Fax: 0470-20-4591

English translation by

Nathan Blackwell